

Doctor recommended additional testing options **✓ Please mark below**

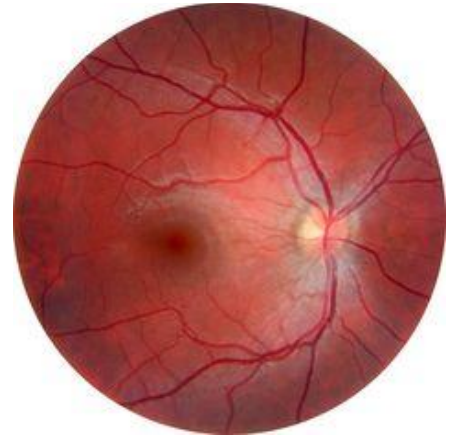
The Doctors at Burlingame & Mock Vision Associates continuously strive to provide our patients with the very best in eye care services. We conduct many tests that are part of your normal vision exam. In addition, we offer specialized tests that are not part of your regular exam. While these tests are optional, the Doctors highly recommend them in order to better assess your overall health in ways that a typical eye exam does not. These specialized tests are NOT covered by insurance plans.

Specialized test #1: **DIGITAL RETINAL IMAGING**

This highly sophisticated camera now allows us to provide you with a more thorough medical analysis of your eye. The image produced shows the optic nerve, blood vessels, nerve fiber layer and the macula, which is the part of the retina responsible for your most clear and detailed vision. The digital retinal imaging assists your Doctor in the early detection of many disorders, including glaucoma, diabetic retinopathy, macular degeneration, retinal detachments, and other vision-threatening conditions. The images will become part of your permanent medical records for comparison with images from future exams. This allows your Doctor to observe even the smallest amount of change from the previous examinations.

Retinal Imaging is recommended for all patients, but highly recommended if you have:

- Never been examined in our office
- Glaucoma, macular degeneration, or loss of vision
- Diabetes, heart disease, or high blood pressure
- A family history of glaucoma, macular degeneration, or loss of vision
- A family history of diabetes, heart disease, or high blood pressure
- Spots or flashes of light in vision, headaches
- High cholesterol
- A history of smoking
- Recommended at age 4 and up



There is an additional fee for this procedure of **\$30.00**.

YES - I choose to have digital retinal imaging performed.

NO - I choose NOT to have digital retinal imaging performed.

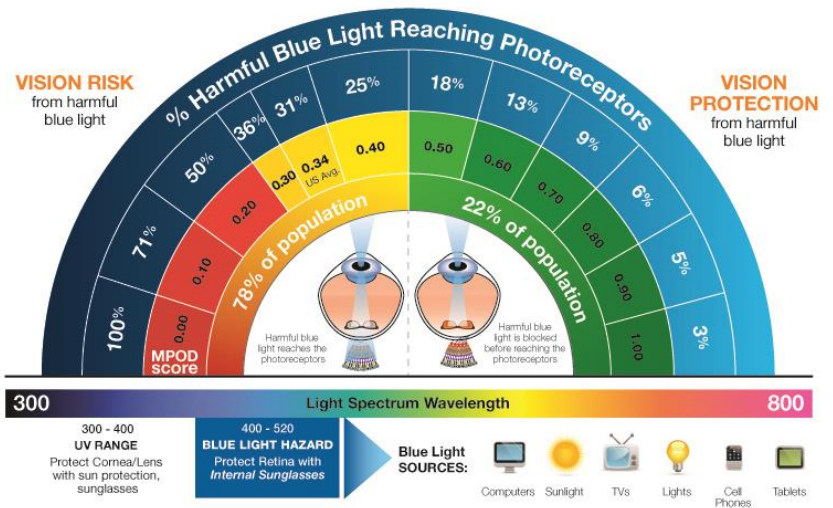
Specialized test #2: **MACULAR PIGMENTATION ASSESSMENT**

This measures the amount of protective pigment within your retina, which helps us predict your risk for Macular Degeneration. Macular pigment acts like "internal sunglasses" to protect the photoreceptors from harmful blue light. As indicated in the diagram to the right, low macular pigment (left side) allows as much as 100% of harmful blue light through to the photoreceptors.

Healthy macular pigment (0.50 – 1.00 on the right side) significantly blocks harmful blue light like a very effective pair of "internal sunglasses."

The Doctors highly recommended this test if you have:

- A family history of macular degeneration
- A family history of unknown vision loss
- Light eyes (blue/green/hazel)
- Fair skin, a sensitivity to light
- A history of excessive exposure to sunlight
- A history of smoking (even if you have quit)
- A history of inadequate consumption of green, leafy vegetables



There is an additional fee for this procedure of **\$30.00**.

YES - I choose to have my macular pigmentation assessed.

NO - I choose NOT to have my macular pigmentation assessed.

Special Consideration: If you choose both tests, the cost is *reduced* by \$10 for a total cost of **\$50.00**.

Printed Name _____

Signature _____

Date _____